



CHIMNEY POND
FARM & LODGE
LAKE GLENVILLE, NC

VENUE PRICE GUIDE 2026-2027

ABOUT OUR VENUE

Nestled in the heart of the Blue Ridge Mountains in Western North Carolina, Chimney Pond Farm offers a captivating retreat surrounded by majestic peaks draped in ethereal mist and lush walls of cascading rhododendrons. Our pristine 120-acre property boasts a flourishing landscape of Fraser fir trees and bountiful blueberry bushes, all situated at an elevation of 3,600 feet. Here, you'll discover the ideal vantage point to behold the serene waters of Lake Glenville, creating a truly enchanting setting for your event.

PACKAGE OVERVIEW

Saturday Exclusive

Collection One

up to 100 Guests - \$16,000

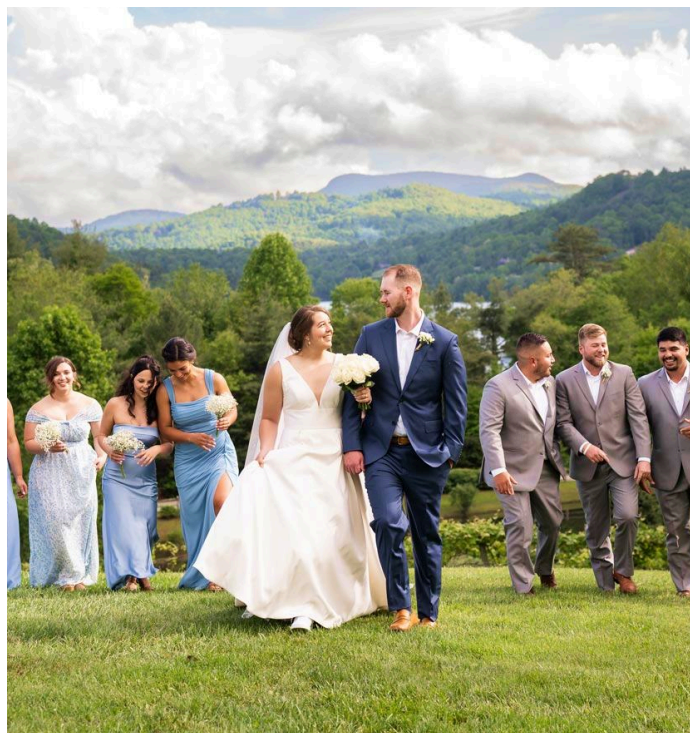
Collection Two

up to 150 Guests - \$18,000

Collection Three

up to 200 Guests - \$20,000

** Hilltop and Farmhouse are required for Saturday exclusive weddings.*



PACKAGE OVERVIEW

Friday and Sunday

Collection One

up to 100 Guests - \$14,000

Collection Two

up to 150 Guests - \$16,500

Collection Three

up to 200 Guests - \$19,500



PACKAGE OVERVIEW

Winter Package

(December - March)

Collection One

up to 100 Guests - \$11,000

Collection Two

up to 150 Guests - \$13,500

Collection Three

up to 200 Guests - \$15,500





What's Included

- Planning portal access with unlimited users. This includes checklists, vendor contacts, and a place to store all wedding planning documents
- Access to getting ready suites.
- Rehearsal Site and Time
- Includes Planning Services

Ceremony Site:

- White Padded Seated Chairs
- Set-Up and Clean-Up
- Limited Decor (Easels, Unity Table, Planters, Lanterns, etc)
- Rain Plan Alternative

Reception Space:

- Farmhouse Tables / 60" Round Tables
- Cocktail Tables
- Chiavari Chairs
- Limited Decor (Votives, Candle and Floral Vases, Tapered Candlestick Holders, Easels, etc)

Planning Services

EVENT COORDINATOR

A day-of Coordinator removes one more item on your to-do list —giving you back time and energy to make a wedding special and memorable. It also allows you to enjoy the experience from sunrise to sunset. Here is a glimpse of what you can expect in terms of day-of-coordinator duties and responsibilities:

INCLUDES:

- Full Planning Meetings
 - 2 Weeks After Booking
 - 6 Months Out
 - 8-10 Weeks Out
 - Month Of
 - Week Of
 - *Phone Calls Throughout the Planning Process
- Leads the rehearsal the day before the event
- Leads the setup process before the event
- Creates a timeline
- Coordinates the processional and recessional for the ceremony
- Guides couple with rentals (candles, linens, dishes, and silverware).
- Helping vendors find their stations and communicating with vendors two weeks before the event
- Putting decorations and supplies in place
- Monitoring the schedule as the event continues
- Staying after the event to manage cleaning duties
- Finding solutions in the case of problems arising prior to/ during the event
- Packs up all items brought by the couple, food, and gifts at the end of the night
- Includes "Day-Of Coordination Team" to assist in the execution of the event

The Experience

Have your forever and always begin here.



Lodging- Check out our cozy and inviting accommodations!

Our property is nestled within the Nantahala National Forest and Blue Ridge Mountains. The area is speckled with enchanting rivers and waterfalls—perfect for your guests to visit and explore. Located only 4 miles to Lake Glenville, 7 miles to Cashiers and 17 miles to Highlands. There are many waterfalls, hiking trails, horseback riding, boating, fishing, golf, snow skiing, ziplining, shopping and other activities closeby.

Bar and Beverage Package

We now proudly offer a Beverage Amenities Package. Designed to elevate your event experience, this package provides premium glassware, coolers, ice, and essential beverage tools, ensuring your guests enjoy every sip with ease and elegance



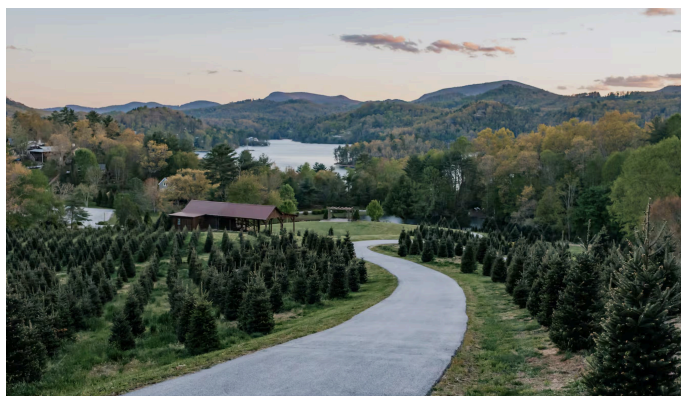
Alpaca Experience- Life is Better with Alpacas

We are excited to announce our newest additions to Chimney Pond Farm: Arnold, Simba, Gretzky, and Mafa. We now have four beautiful Alpacas on our property. Alpacas are the gentle yet inquisitive relative to the llama. They have a very social nature and make a great family friendly addition to our farm. Check out the interactive Alpaca experiences available for you and your family to enjoy.



Love Notes

A perfect canvas for your fairytale wedding



ALISSA BROADWATER:

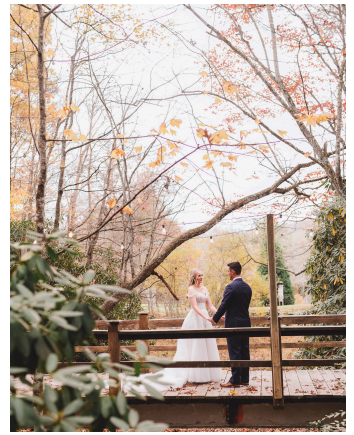
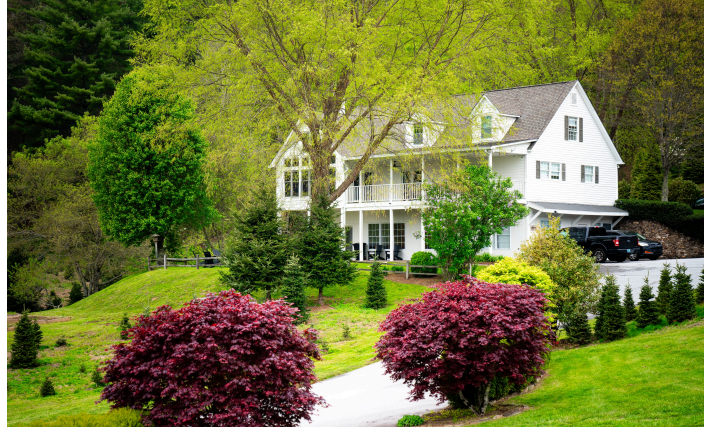
"This wedding venue is absolutely breathtaking!!! The pictures do not do it justice. I had my wedding here in November 2024 and it was the most perfect day. As someone who is not from around the area, Brooke did an amazing job with helping me find vendors and reaching out to companies for me. I truly felt like I had hired on a full time wedding planner. Brooke was the absolute best and I could not have done it without her. I put my full trust in her for the day of and she absolutely made my vision come to life. Raquel was also amazing at assisting in any questions I had. I had a vision for the rehearsal dinner on property and they were immediately on it and didn't let one detail slip. Brooke was not just a day of coordinator; she was my right hand girl the whole weekend. Everything went so seamless and perfect. If there was any hiccup, I did not notice and she did a great job of handling everything. I wish I could hire her for every event! I cannot wait to visit Chimney Pond Farm on anniversaries, trips, etc.... We did book the housing on property and it was everything I expected and more. If I could do it all over again, I would not think twice about having it at chimney pond farm with this team. They were amazing and I can not thank you all enough."



ROB SANCHEZ:

"Honestly was blown away by how pretty this place is. It's so cool to walk through all of the Christmas trees. The homes are perfectly designed and have plenty of space for guests. It's incredibly convenient to dining, especially Happ's Place which was a pleasant surprise. We highly recommend renting a boat and heading out on the lake, which is only about 5 minutes away from this house. Can't wait to visit again closer to Christmas!!"

Gallery





CHIMNEY POND
FARM & LODGE