



CHIMNEY POND  
FARM & LODGE  
LAKE GLENVILLE, NC

# SERVICES & PRICING GUIDE

## About Our Venue

Nestled in the heart of the Blue Ridge Mountains in Western North Carolina, Chimney Pond Farm offers a captivating retreat surrounded by majestic peaks draped in ethereal mist and lush walls of cascading rhododendrons. Our pristine 120-acre property boasts a flourishing landscape of Fraser fir trees and bountiful blueberry bushes, all situated at an elevation of 3,600 feet. Here, you'll discover the ideal vantage point to behold the serene waters of Lake Glenville, creating a truly enchanting setting for your event.



## PACKAGE OVERVIEW

# Saturday Exclusive

### Collection One

*up to 100 Guest - \$15,000*

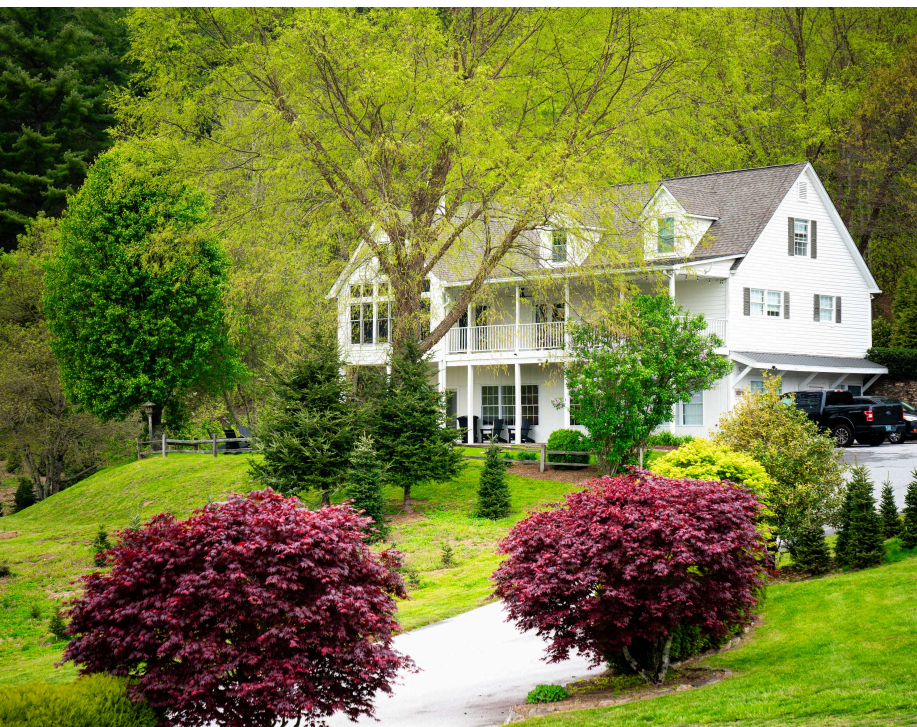
### Collection Two

*up to 150 Guest - \$17,500*

### Collection Three

*up to 200 Guest - \$20,000*

*\* Hilltop and Farmhouse is required for Saturday exclusive weddings.*





## PACKAGE OVERVIEW

# Friday and Sunday

### Collection One

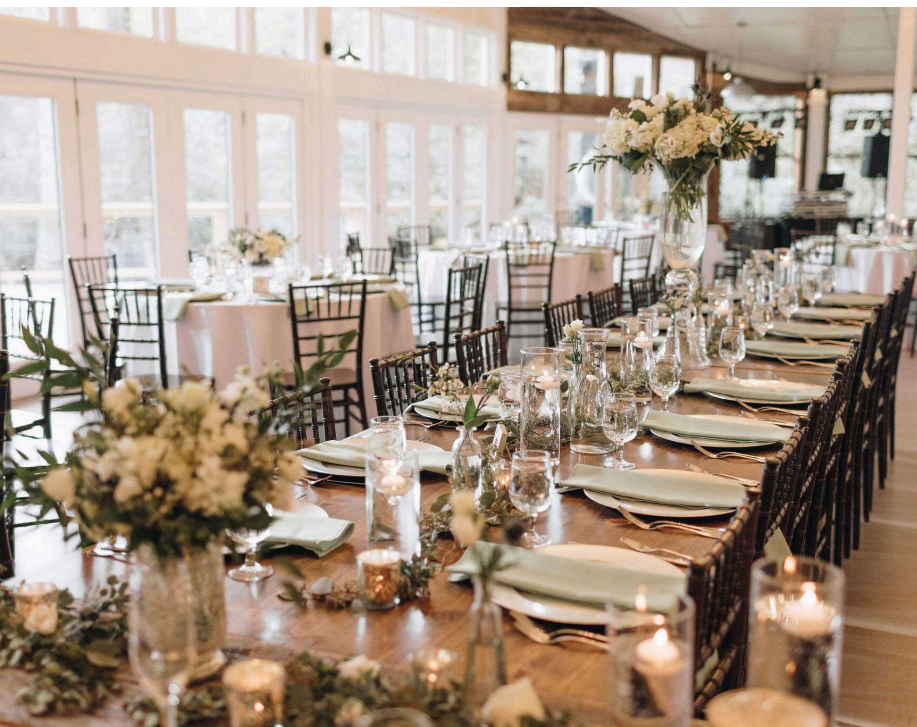
*up to 100 Guest - \$10,000*

### Collection Two

*up to 150 Guest - \$12,500*

### Collection Three

*up to 200 Guest - \$15,000*





PACKAGE OVERVIEW

# Winter Package

(December - March)

## Collection One

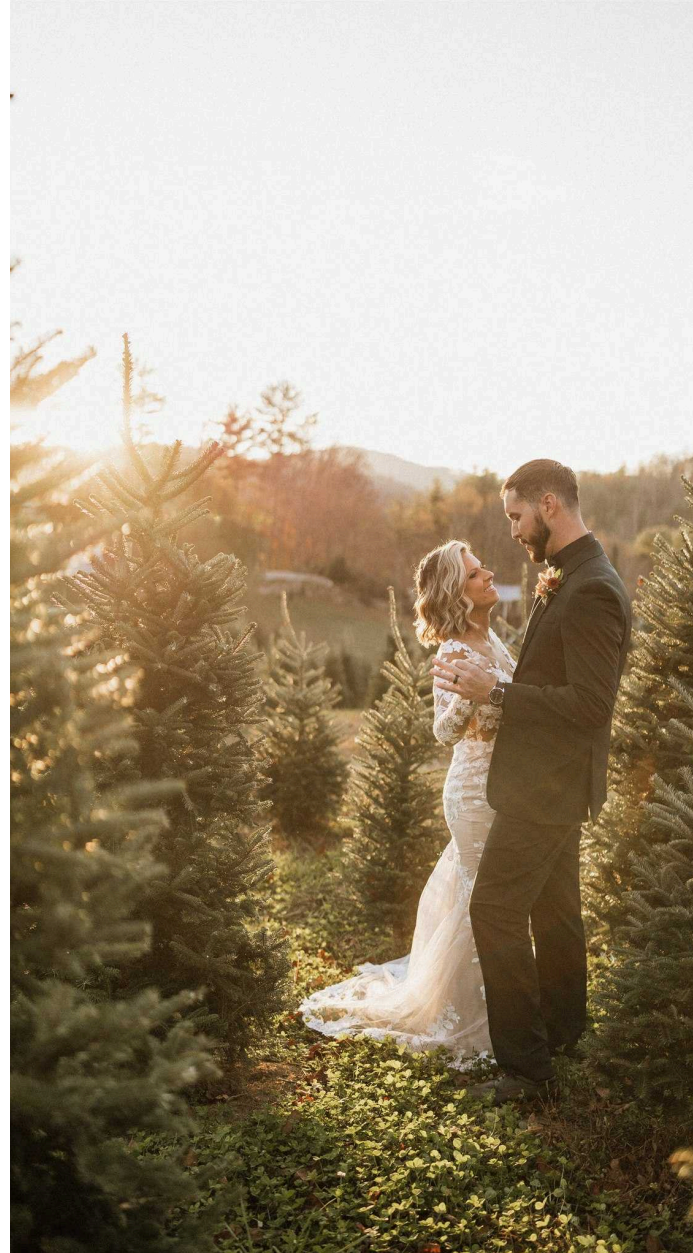
*up to 100 Guest - \$8,500*

## Collection Two

*up to 150 Guest - \$11,000*

## Collection Three

*up to 200 Guest - \$13,500*





# What's Included

## AMENITIES & SERVICES:

- Planning portal access with unlimited users. This includes checklists, vendor contacts, and a place to store all wedding planning documents
- Access to getting ready suites.
- Rehearsal Site and Time
- Includes Planning Services

## CEREMONY SITE:

- White Padded Seated Chairs
- Set-Up and Clean-Up
- Limited Decor (Easels, Unity Table, Planters, Lanterns, etc)
- Rain Plan Alternative

## RECEPTION SPACE:

- Farmhouse Tables / 60" Round Tables
- Cocktail Tables
- Chiavari Chairs
- Limited Decor (Votives, Candle and Floral Vases, Tapered Candlestick Holders, Easels, etc)





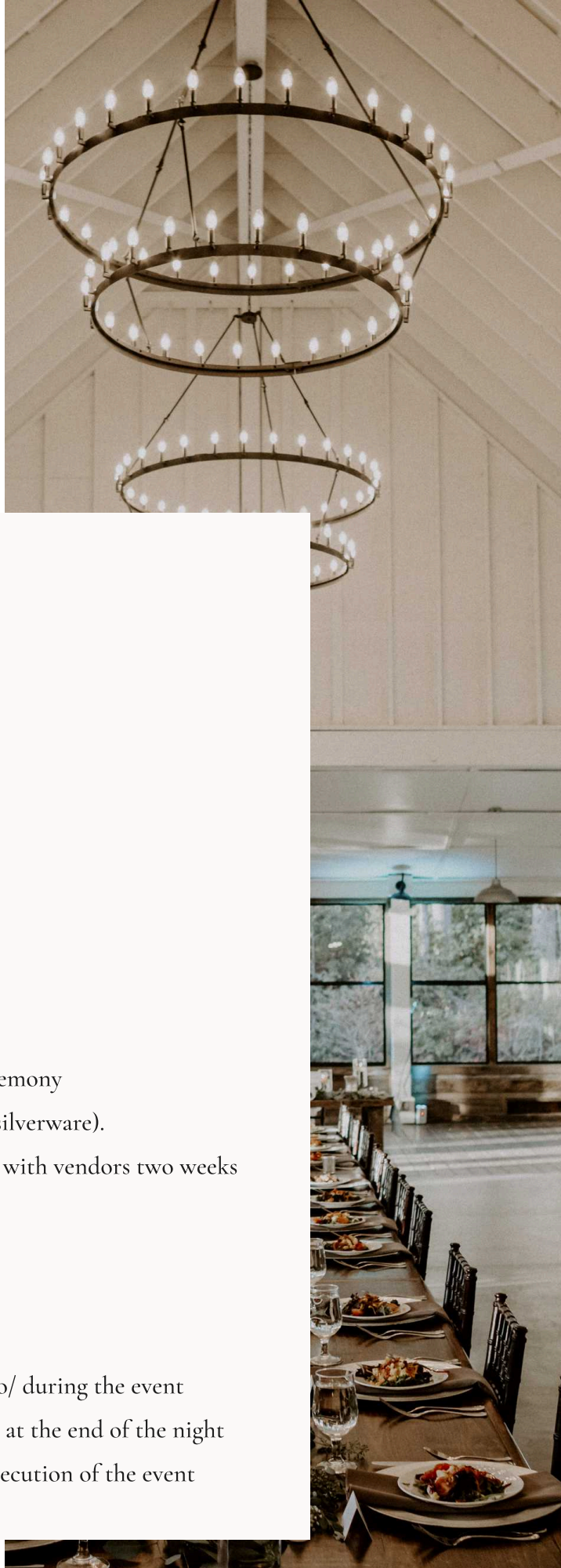
# Planning Services

## Event Coordinator

A day-of planner removes one more item on your to-do list—giving you back time and energy to make a wedding special and memorable. It also allows you to enjoy the experience from sunrise to sunset. Here is a glimpse of what you can expect in terms of day-of-coordinator duties and responsibilities:

### INCLUDES:

- Full Planning Meetings
  - *2 Weeks After Booking*
  - *6 Months Out*
  - *8-10 Weeks Out*
  - *Month Of*
  - *Week Of*
  - *\*Phone Calls Throughout the Planning Process*
- Leads the rehearsal the day before the event
- Leads the setup process before the event
- Creates a timeline
- Coordinates the processional and recessional for the ceremony
- Guides couple with rentals (candles, linens, dishes, and silverware).
- Helping vendors find their stations and communicating with vendors two weeks before the event
- Putting decorations and supplies in place
- Monitoring the schedule as the event continues
- Staying after the event to manage cleaning duties
- Finding solutions in the case of problems arising prior to/ during the event
- Packs up all items brought by the couple, food, and gifts at the end of the night
- Includes "Day-Of Coordination Team" to assist in the execution of the event





# The Experience

Have your forever and always begin here.



## Lodging- Check out our cozy and inviting accomodations!

Our property is nestled within the Nantahala National Forest and Blue Ridge Mountains. The area is speckled with enchanting rivers and waterfalls —perfect for your guests to visit and explore. Located only 4 miles to Lake Glenville, 7 miles to Cashiers and 17 miles to Highlands. There are many waterfalls, hiking trails, horseback riding, boating, fishing, golf, snow skiing, ziplining, shopping and other activities closeby.



## Bar and Beverage Package

We now proudly offer a Beverage Amenities Package.



## Life is Better with Alpacas

We are excited to announce our newest additions to Chimney Pond Farm: Arnold, Simba, Gretzky, and Mafa. We now have four beautiful Alpacas on our property. Alpacas are the gentle yet inquisitive relative to the llama. They have a very social nature and make a great family friendly addition to our farm. Check out the interactive Alpaca experiences available for you and your family to enjoy.





## Love Notes

A perfect canvas for your fairytale wedding.



*"We loved working with Raquel at Chimney Pond Farm and could not have had a more smooth and pleasant experience. We stayed onsite for a couple days before the venue and even then the staff was a great help. Raquel and her team made sure my wife and I didn't have to worry about anything on the day of our wedding and followed our wishes without any issues. The venue is absolutely beautiful but having people there that know what they're doing is even more helpful. Raquel and her team provided us with a list of vendors which also made the process of booking things like the photo/video people so much more easier than we could've imagined. Even with questionable weather everything was perfect!"*

- Kaleb Damaschke

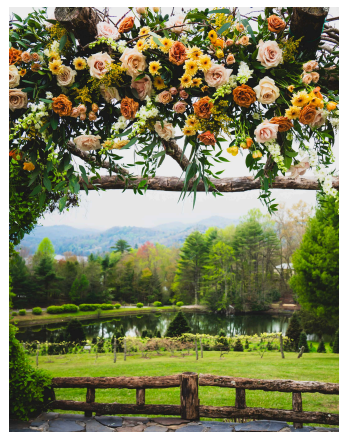
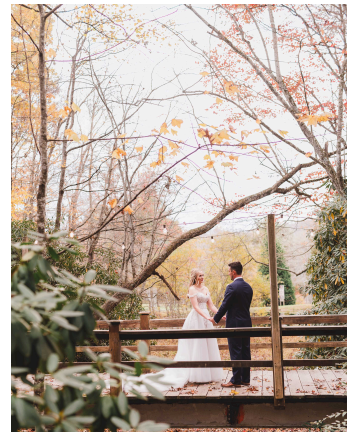


*"Honestly was blown away by how pretty this place is. It's so cool to walk through all of the Christmas trees. The homes are perfectly designed and have plenty of space for guests. It's incredibly convenient to dining, especially Happ's Place which was a pleasant surprise. We highly recommend renting a boat and heading out on the lake, which is only about 5 minutes away from this house. Can't wait to visit again closer to Christmas!"*

- Rob Sanchez



# Gallery





# Ready to book?

*Pop open the bubbly and let the fun begin!*

We are so excited to work with you! Please use the form on our website to send an email. We will reply within 24-48 hours.

## CONTACT INFORMATION

Phone: (704) 412-9748

Email: [events@chimneypondfarm.com](mailto:events@chimneypondfarm.com)

Website: [chimneypondfarm.com](http://chimneypondfarm.com)

## ADDRESS

Chimney Pond Farm  
240 Chimney Pond Rd.  
Glenville, NC 28736

